

FOR SALE



Lodge Drive, Palmers Green, London, N13
£410,000 Leasehold - Share of Freehold

Anthony Webb
ESTATE AGENTS

Lodge Drive, Palmers Green, London, N13

Stunning one bedroom converted flat occupying the entire ground floor of this Edwardian property offering a spacious living space, modern kitchen/bathroom, off street parking and south facing private rear garden.

Lodge Drive is a popular residential turning off Green Lanes within a few minutes walk of Palmers Greens shops, restaurants, bus routes and mainline station into Moorgate. There are numerous green spaces/walks within easy reach including The New River, Hazelwood recreation ground and Broomfield Park.

120 year lease remaining • No Service charge or ground rent • Living room with wood floor and French doors to garden • Modern kitchen with tiled floor and integrated white goods including a dishwasher • Spacious double bedroom with large round bay window and bespoke shutters • Modern bathroom suite with tiled floor • Under stairs storage cupboard • Double glazing • Gas central heating • Sole use of block paved to front • Private south facing rear garden with decking and timber flower and shrub borders.

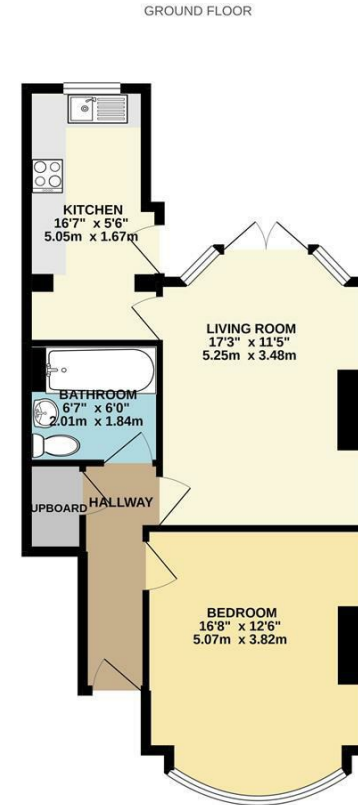
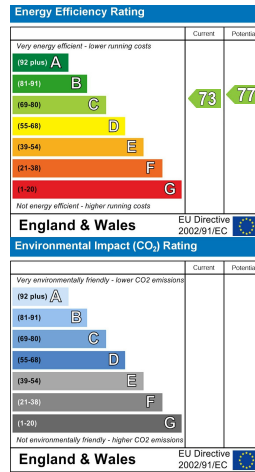
- One double bedroom
- Ground floor flat
- Edwardian conversion
- Spacious living room
- Modern fitted kitchen
- Modern bathroom
- Off street parking
- Own private rear garden





Lodge Drive
Palmers Green
London
N13 5JZ

Tenure: Leasehold - Share of Freehold
Gross Internal Area: 570.00 sq ft



TOTAL FLOOR AREA - 570sq ft (53.0 sq m.) approx.
Whilst every attempt has been made to ensure the accuracy of the floorplan contained here, measurements of doors, windows, rooms and any other items are approximate and no responsibility is taken for any error, omission or mis-statement. This plan is for illustrative purposes only and should be used as such for any prospective purchaser. The services, systems and appliances shown have not been tested and no guarantee as to their operability or efficiency can be given.
Made with Metorex ©2021

Property particulars as supplied by Anthony Webb Estate Agents are set out as a general outline in accordance with the Property Misdescriptions Act (1991) only for the guidance of intending purchasers of lessees, and do not constitute any part of an offer or contract. Details are given without any responsibility, and any intending purchasers, lessees or third parties should not rely on them as inspection or otherwise as to the correctness of each of them. We have not carried out a structural survey and the services, appliances and specific fittings have not been tested. All photographs, measurements, floor plans and distances referred to are given as a guide only and should not be relied upon for the purchase of carpets or any other fixtures statements or representations of fact, but must satisfy themselves by or of fittings, gardens, roof terraces, balconies and communal gardens as well as tenure and lease details cannot have their accuracy guaranteed for intending purchasers. Lease details, service ground rent (where applicable) are given as a guide only and should be checked and confirmed by your solicitor prior to exchange of contracts. no person in the employment of Anthony Webb has any authority to make any representation or warranty whatever in relation to this property.

348 Green Lanes, Palmers Green, London N13 5TJ
020 8882 7888
palmersgreen@anthonywebb.co.uk
anthonywebb.co.uk

Anthony Webb
ESTATE AGENTS